

ISAAC O3 Multi-Sensor

With seven different sensors on board, the O3 utilizes Sensor Fusion for enhanced occupancy detection, temperature reading, and more.



5 Unique Sensor Types

The ISAAC O3 Multi-Sensor contains 5 unique sensor types that you can use to monitor rooms.



Temperature

Detect ceiling, surface, and human height temperature.



Humidity

Detect ceiling and human height humidity.



Motion

Detect if there is motion in the room.



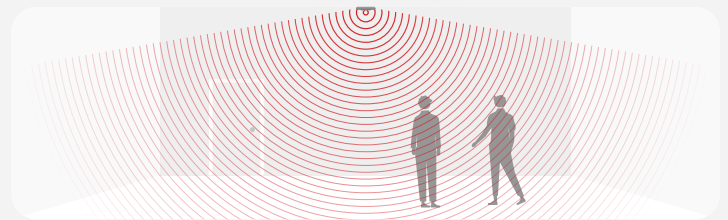
Light

Detect light level intensity.



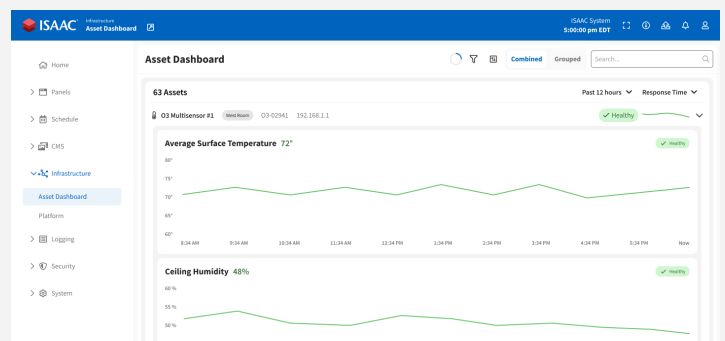
Sound

Detect occupancy using sound from two on-board microphones.



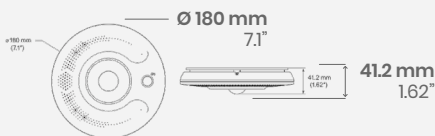
Occupancy Count

Occupant estimation uses onboard sensors and machine learning to estimate the number of people in a space.

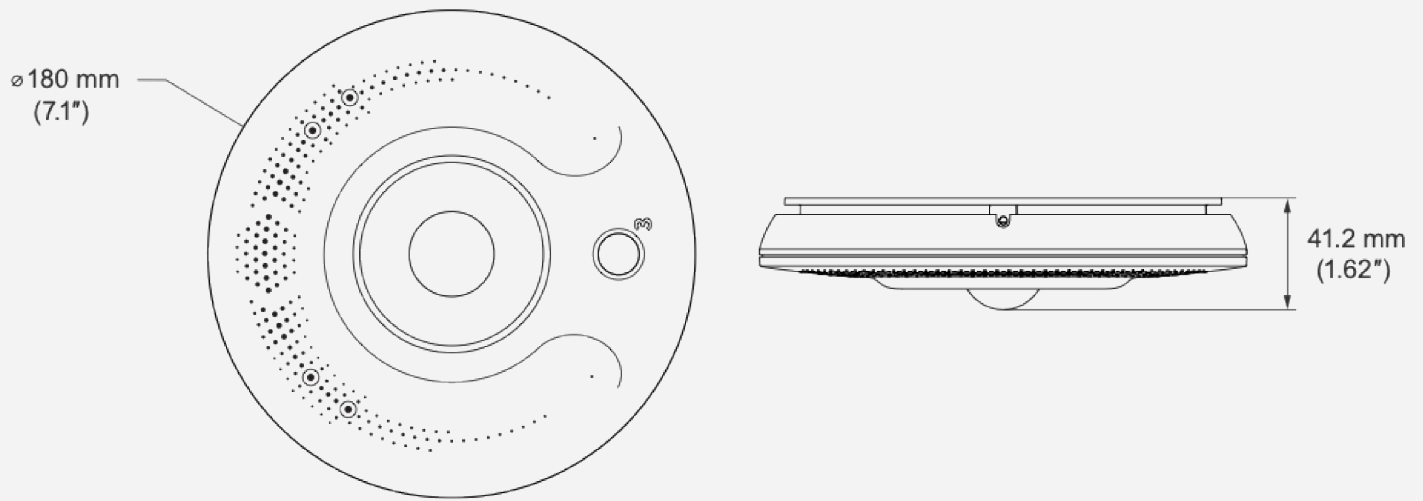


Monitoring Sensors

Give your O3 sensor a name and enter its IP Address to start monitoring in the Asset Dashboard. This allows you to view up to the last 30 days of data from the sensor



Order Reference
O3-EMI



Temperature Sensors

Composite temperature value $\pm 0.5^{\circ}\text{C}$ ($\pm 1.0^{\circ}\text{F}$) typical with calibration.

- Digital temperature sensor $\pm 0.5^{\circ}\text{C}$ ($\pm 1.0^{\circ}\text{F}$)
- Infrared temperature sensor $\pm 1^{\circ}\text{C}$ ($\pm 1.8^{\circ}\text{F}$)

Humidity Sensors

Accuracy $\pm 3\%$ for 20% to 80% RH @ 15°C to 30°C (59°F to 86°F)

Motion Sensor

Passive infrared (PIR) motion sensor motion sensing range:

- 9.1 m (30 ft) diameter @ 4.6 m (15 ft) mounting height.
- 5.5 m (18 ft) diameter @ 2.4 m (8 ft) mounting height.

Light Sensor

$\pm (6+5\% \text{ reading}) \text{ lx}$

Audio Input

2 microphones for acoustic occupancy detection.

LED Ring

Full color ring with 12 RGB LEDs

Audio Output

1.0 W mono speaker for tones and audio output.

Universal Points

Up to 2 inputs (16-bit), software configurable for the following types:

- 0-5 VDC
- 0-10 VDC
- 10 k Ω thermistor
- Dry contact (using 10 k Ω thermistor software setting)
- 4-20 mA (using external 250 Ω resistor on 0-5 V setting)

Up to 2 outputs (12-bit), software configurable for the following types:

- 0-10 V @ 20 mA max (sourcing)
- 1-10 V @ 10 mA max (sinking)

Connectors

Removable screw-type terminal connectors.

Wiring Class

Class 2 / SELV

Power

24 VDC (20-28 VDC) (Not included), 2 W typical, 9 W max, Class 2

Interfaces and Protocols

- BACnet (BACnet/IP, BACnet/Ethernet, BACnet/SC)
- MQTT
- BLE 5.0

Technology

- Arm® Cortex®-A7 MPU + Cortex-M4 MCU
- 256 DDR3L RAM
- 4 GB eMMC flash memory
- Real-time clock (RTC)
- Supercapacitor power backup for RTC

Communication Ports

Dual Ethernet (10/100 Base-T)

Ambient Rating

- 0°C to 45°C (32°F to 113°F)
- 10% to 95% RH (non-condensing)

Dimensions

180 x 41.5 mm (7.1 x 1.6 in.)

Weight

350 g (0.77 lb)

Compliance & Listings

- CE
- FCC/IC
- NCC (in progress)
- C-UL Listed
- UL 916 Listed